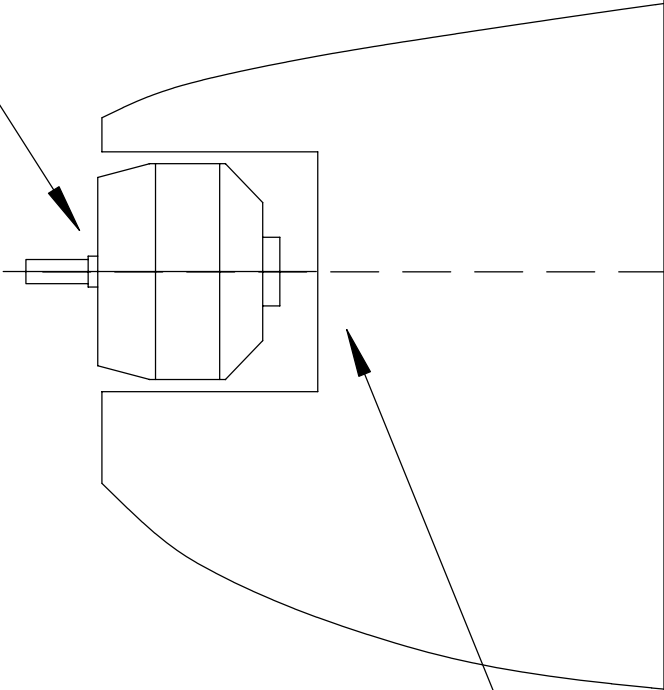


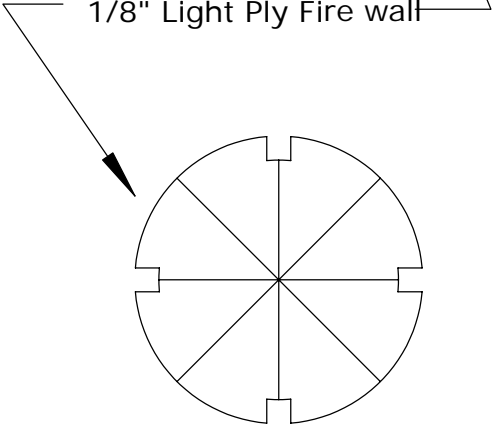
Axi 2208/xx shown



Inch Scale



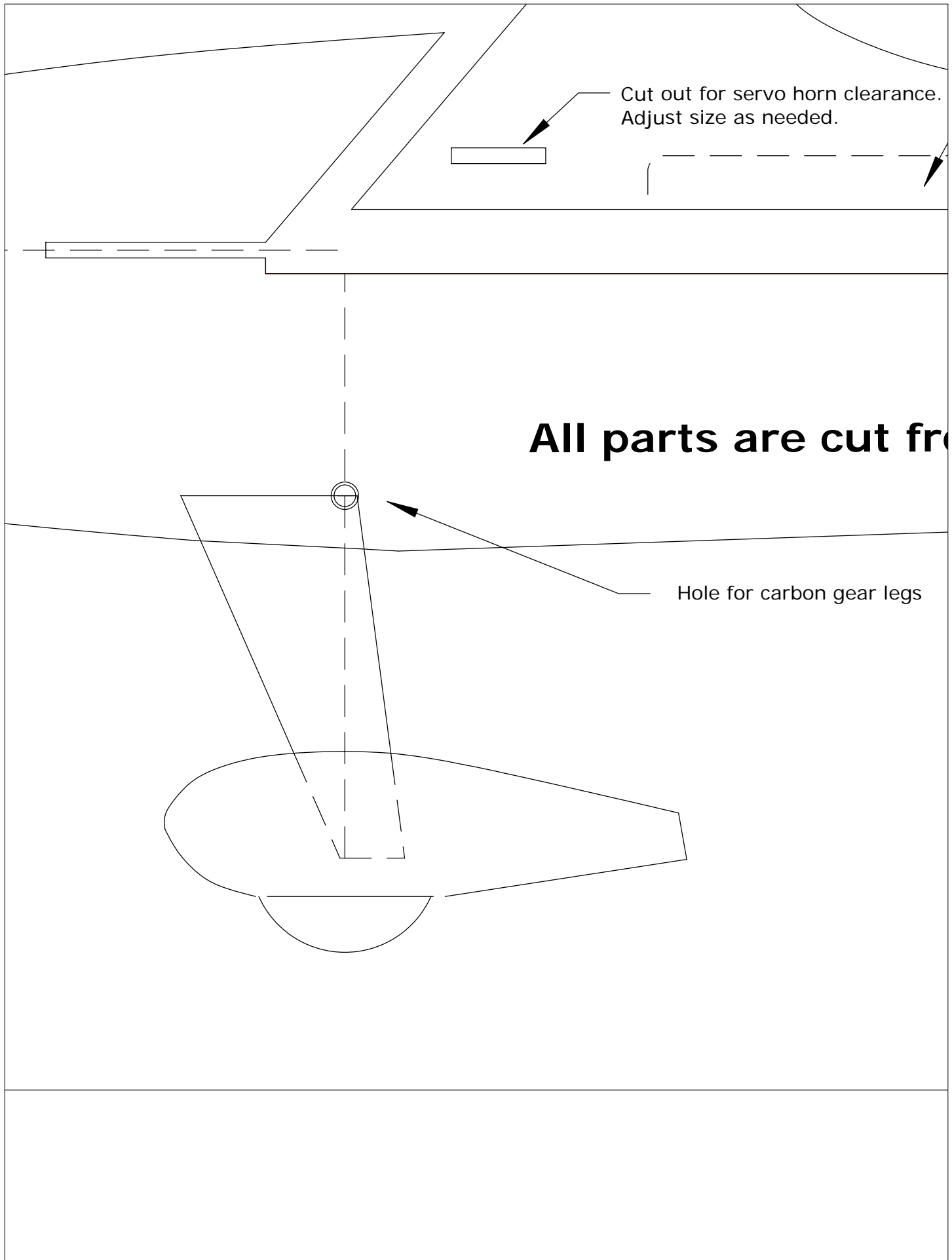
1/8" Light Ply Fire wall



Inch Scale



0 1 2 3 4 5 6



Ac  
af  
cr

Elev. and Rud. servo cutouts (adjust size)

om 3mm Depron unless otherwise noted

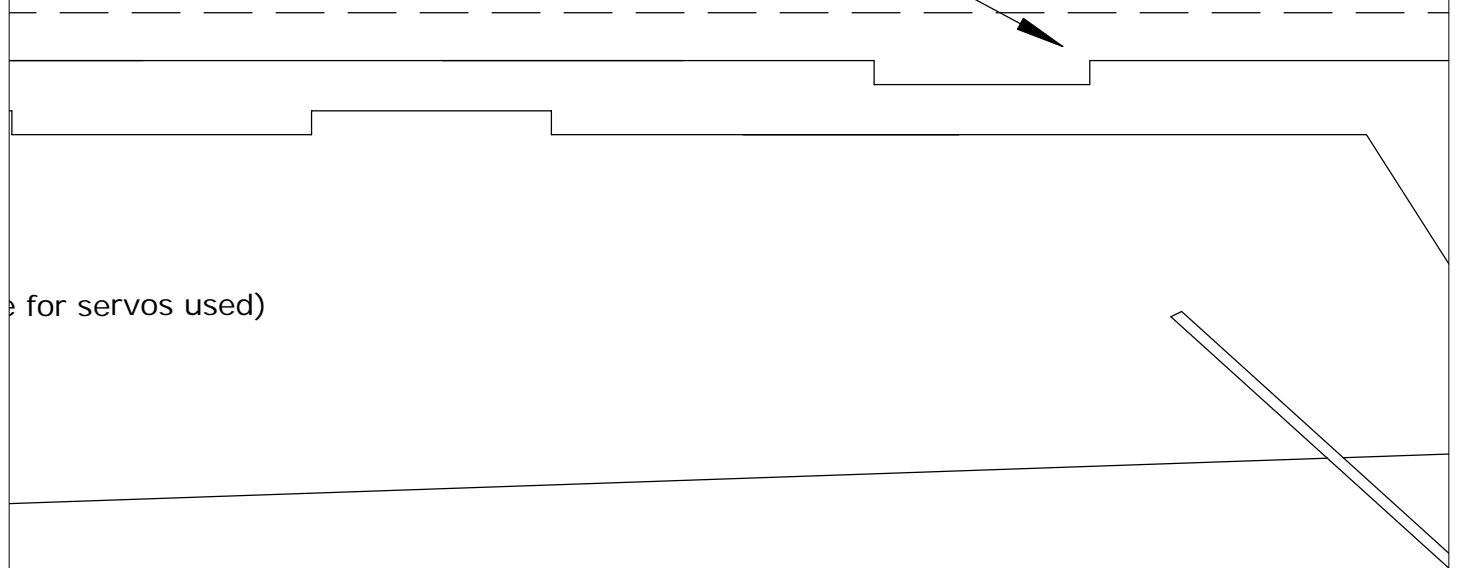
Aileron

Aileron Push rods

Aileron Servo

Aileron

add 1/4" triangle balsa to fuselage joint  
after top fuselage is glued to horizontal fuselage  
cross piece.



# Min

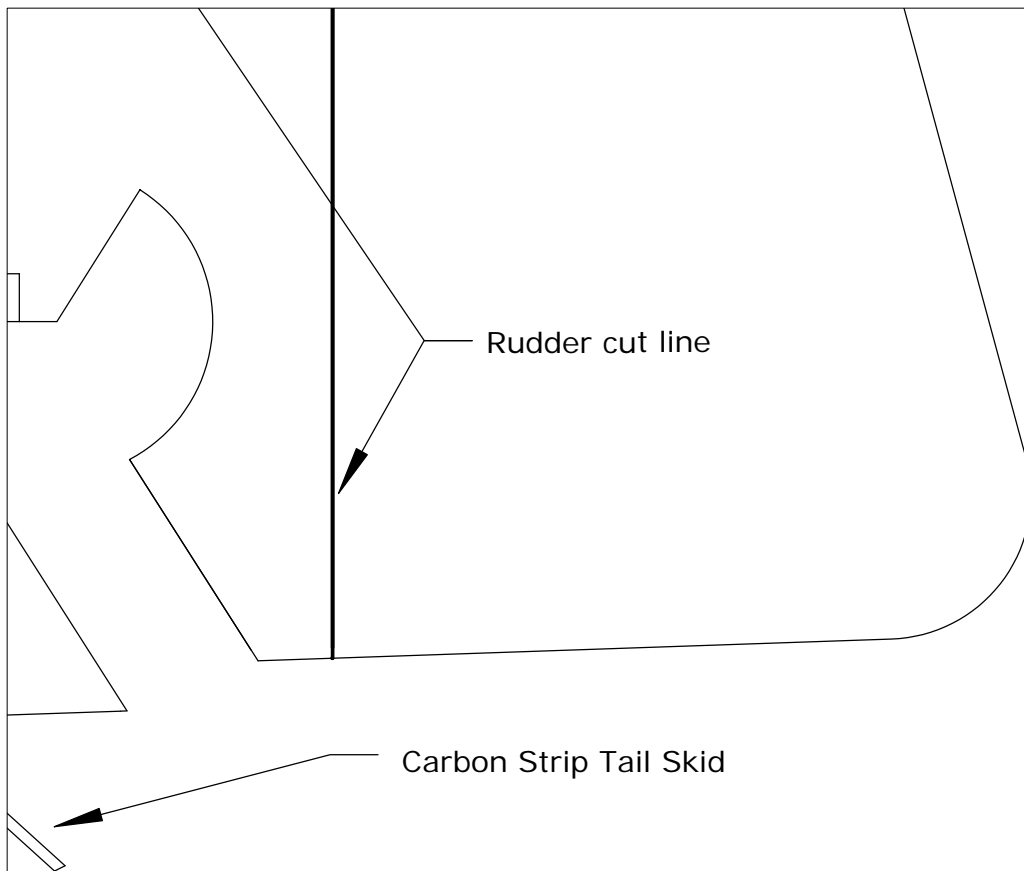
Wingspan: 32"

Wing Area: 243 sq. in

Weight: 6-8oz.

Motor: Axi 2208/34, CD

Battery: 2S 340-850 Lip

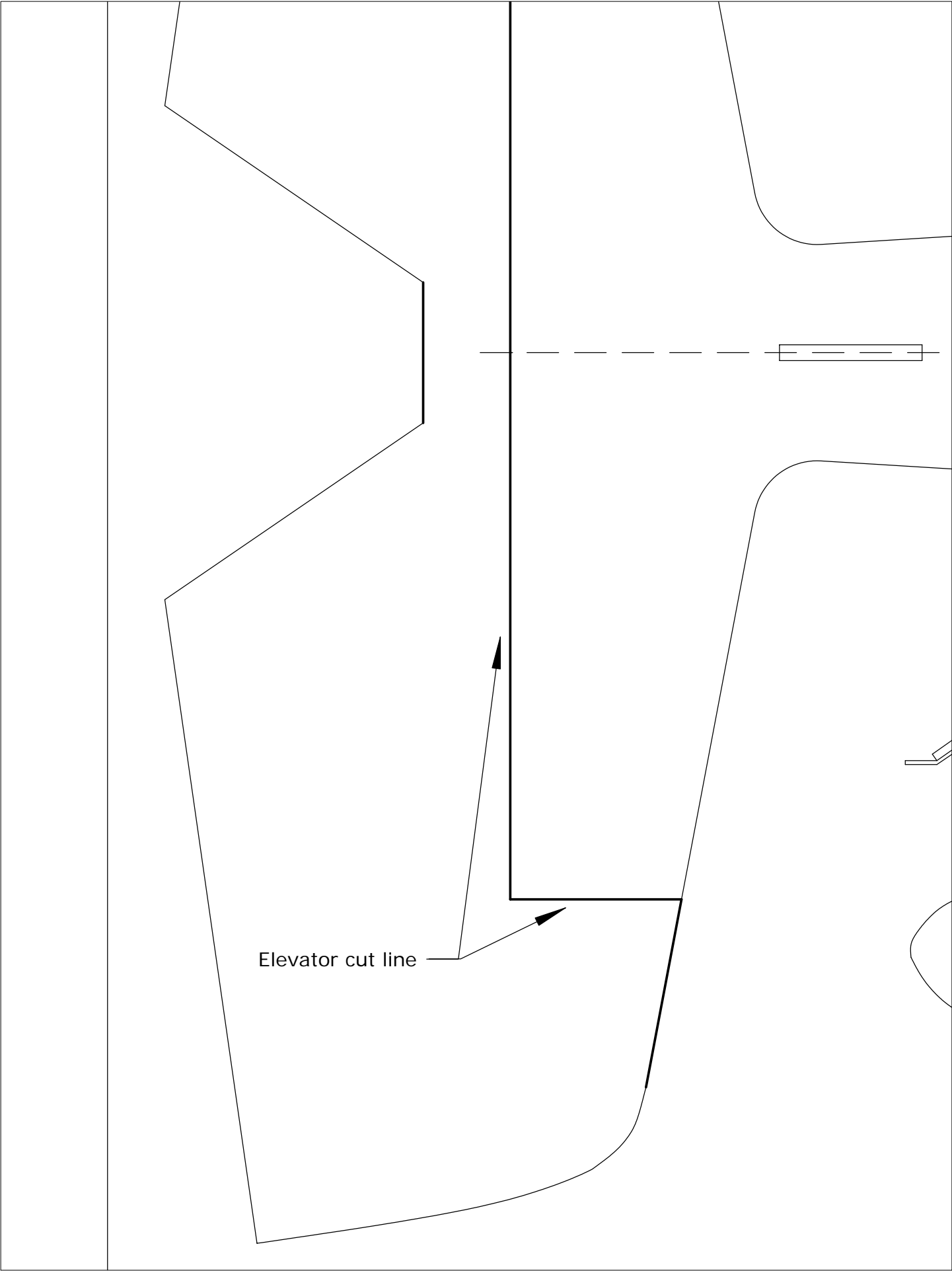


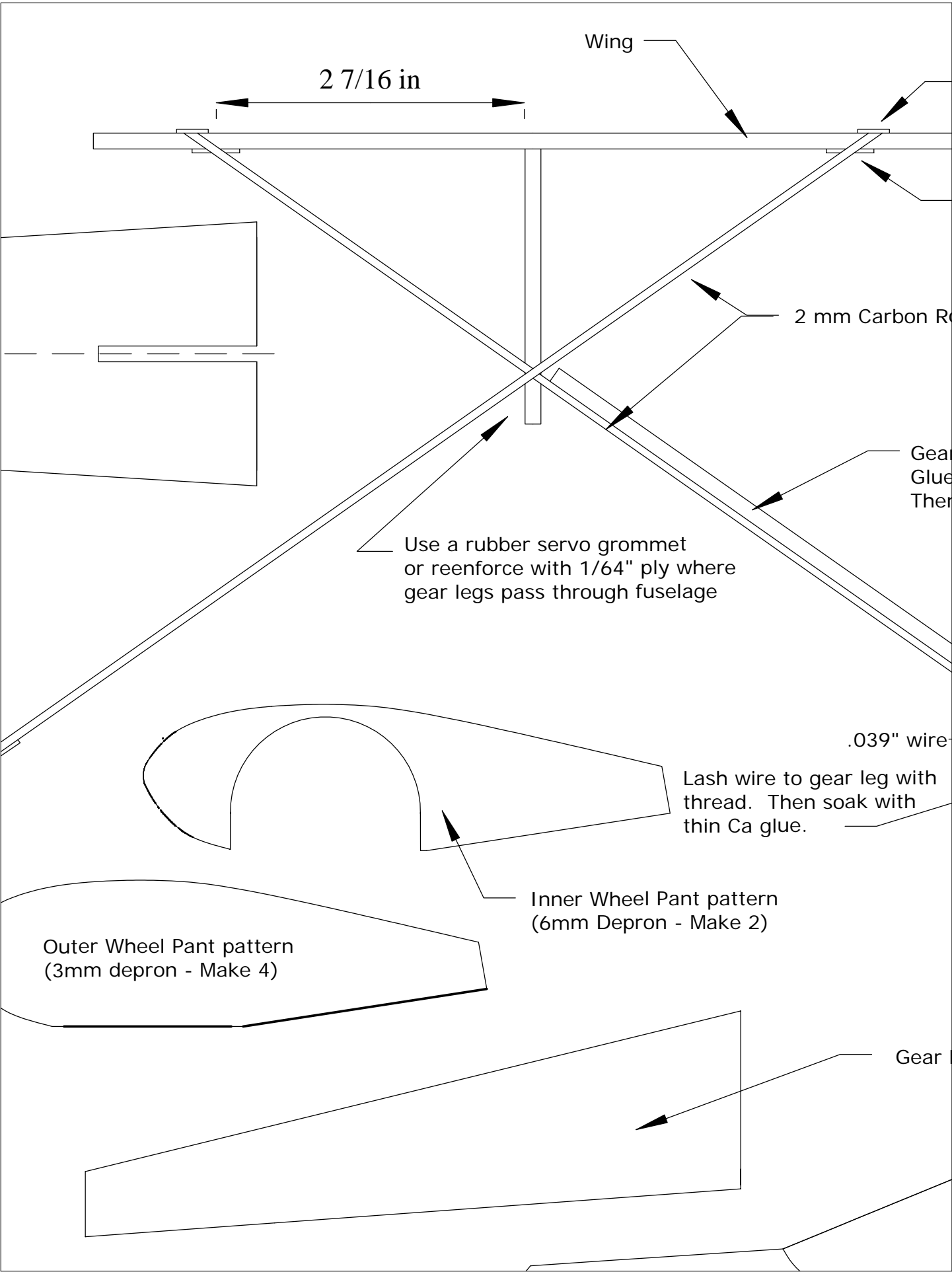
ni **3DX**

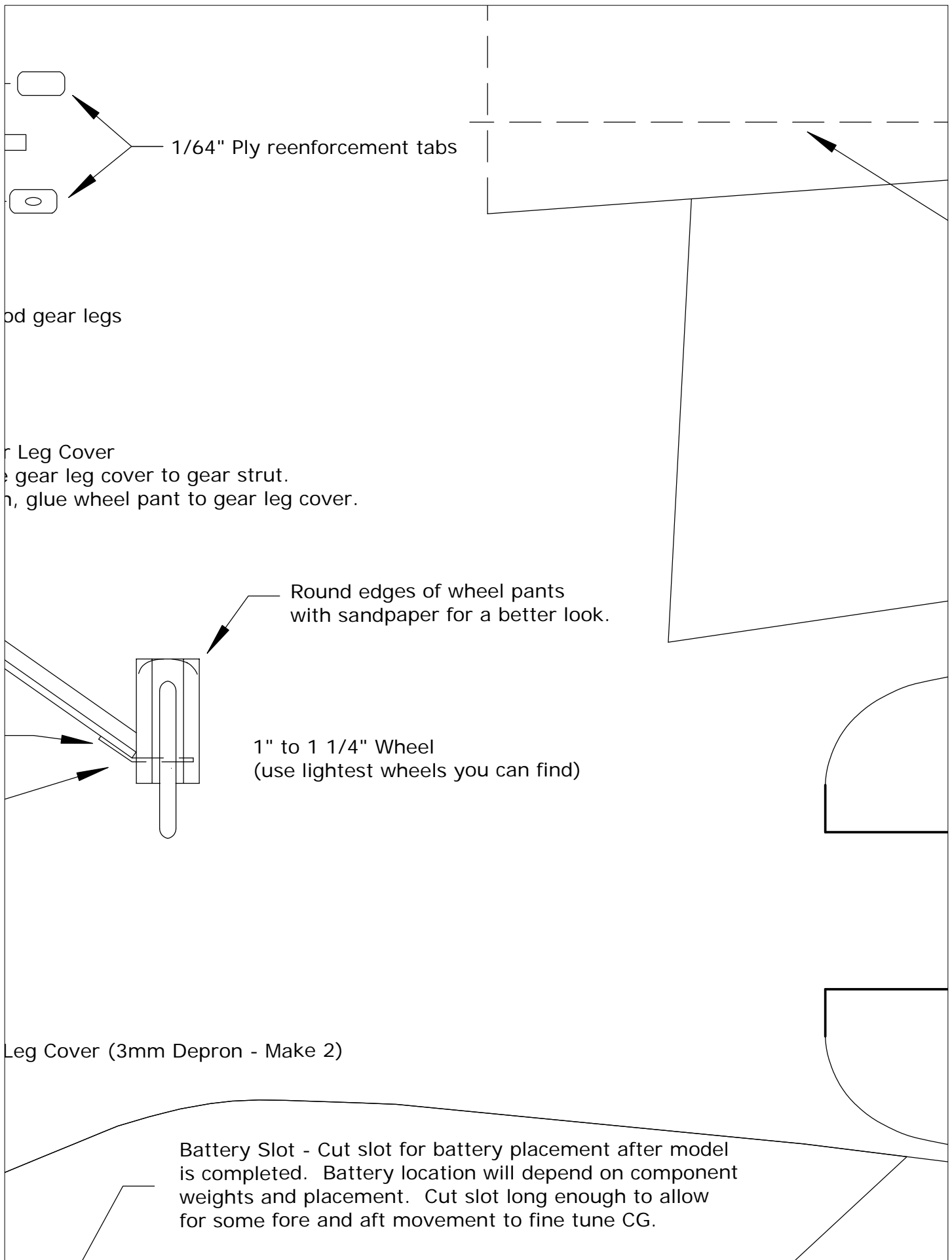
Designed and Drawn By:  
Tim Hart

ROM [www.foamyfactory.com](http://www.foamyfactory.com)

O Copyright 2004, Foamy Factory Models, Timothy Hart







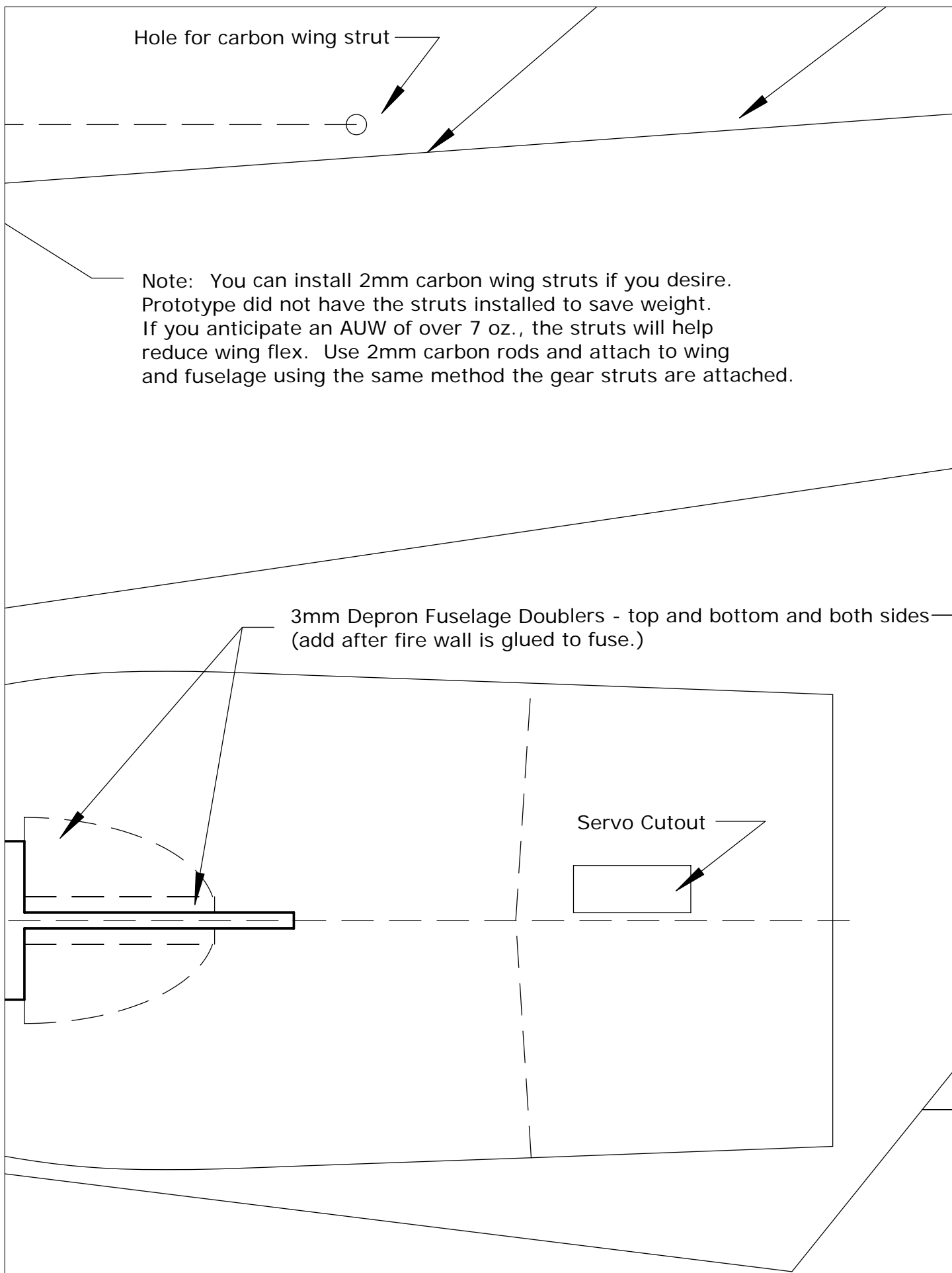


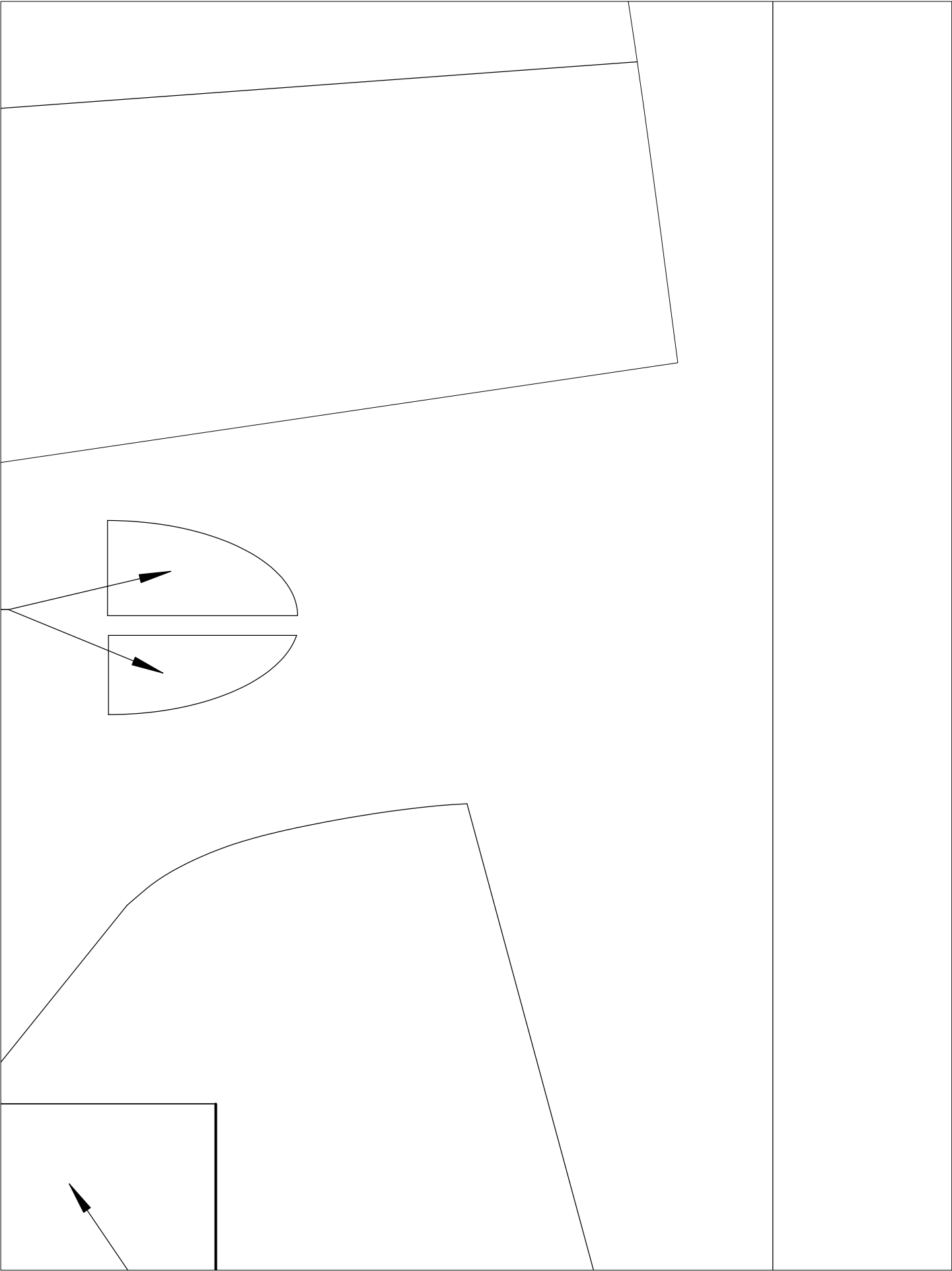
Hole for carbon wing strut

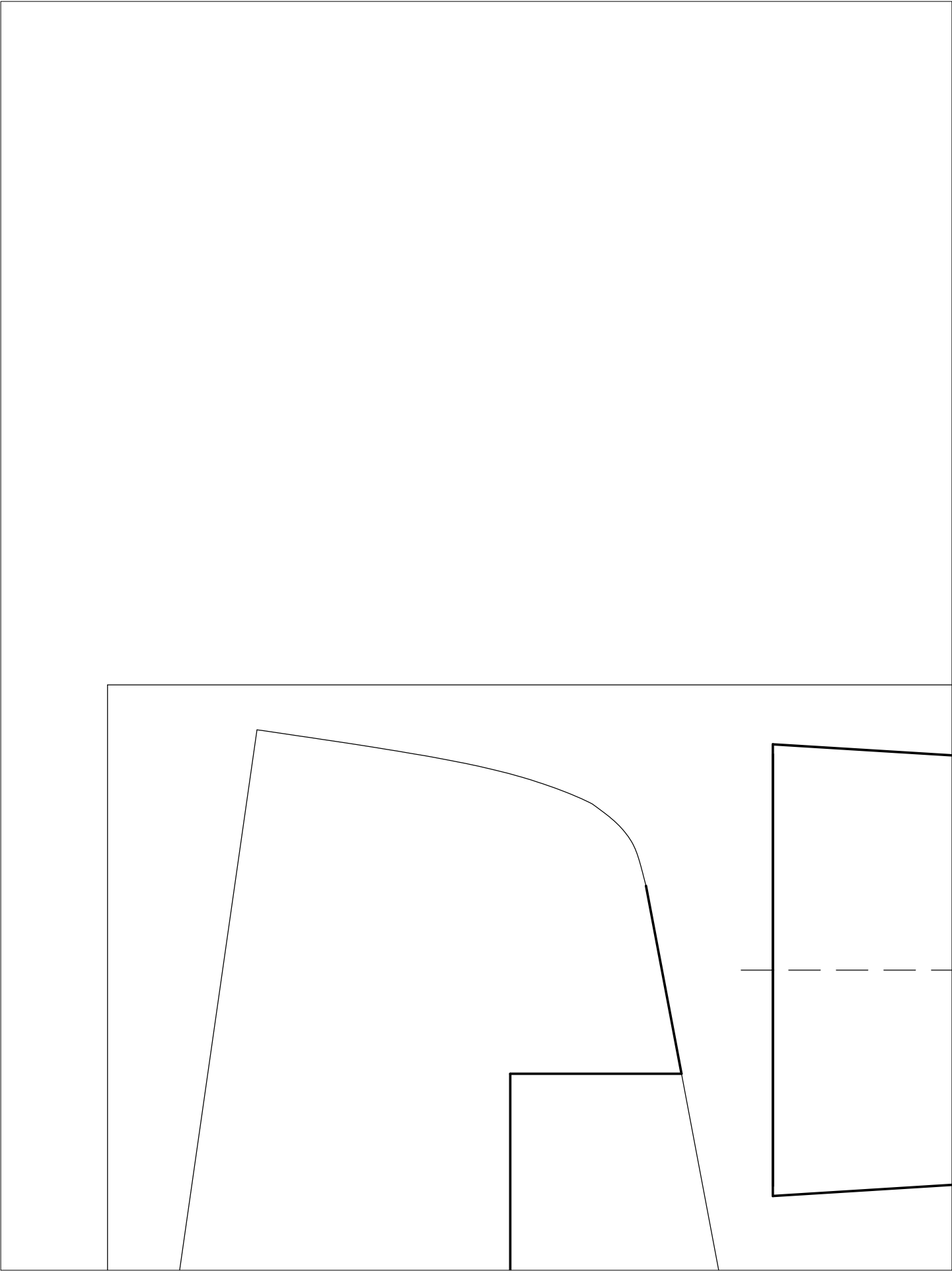
Note: You can install 2mm carbon wing struts if you desire. Prototype did not have the struts installed to save weight. If you anticipate an AUW of over 7 oz., the struts will help reduce wing flex. Use 2mm carbon rods and attach to wing and fuselage using the same method the gear struts are attached.

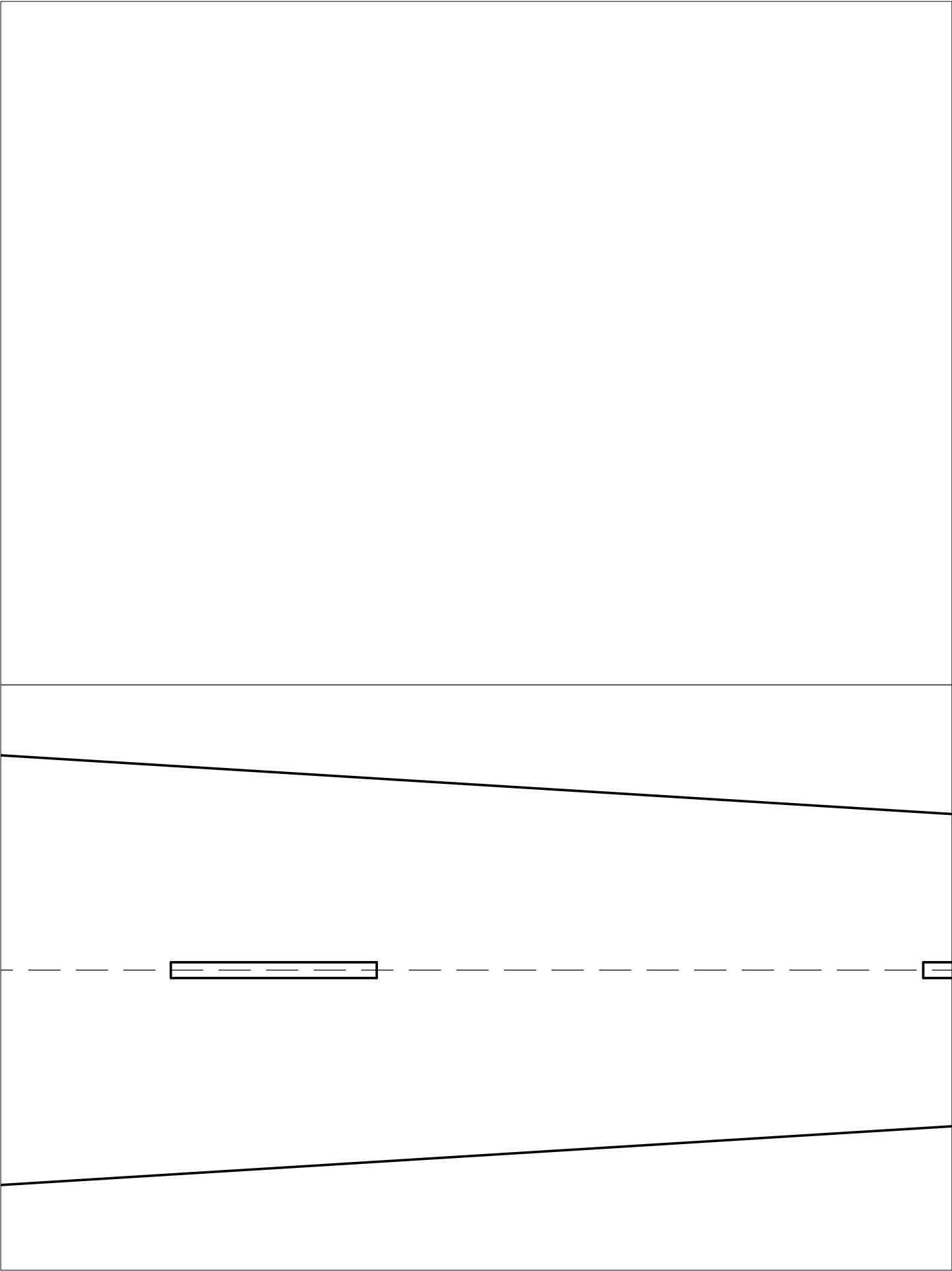
3mm Depron Fuselage Doublers - top and bottom and both sides  
(add after fire wall is glued to fuse.)

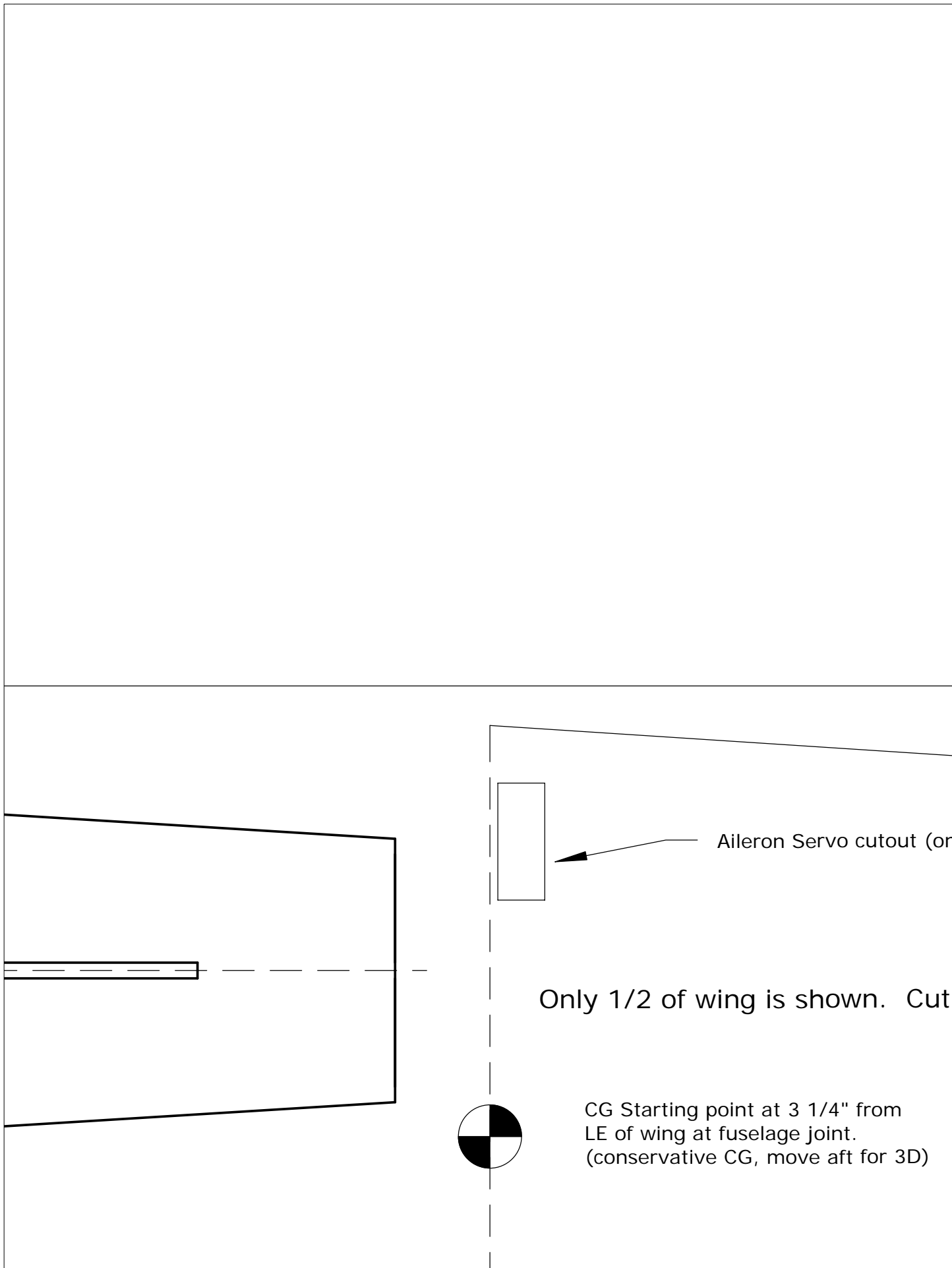
Servo Cutout

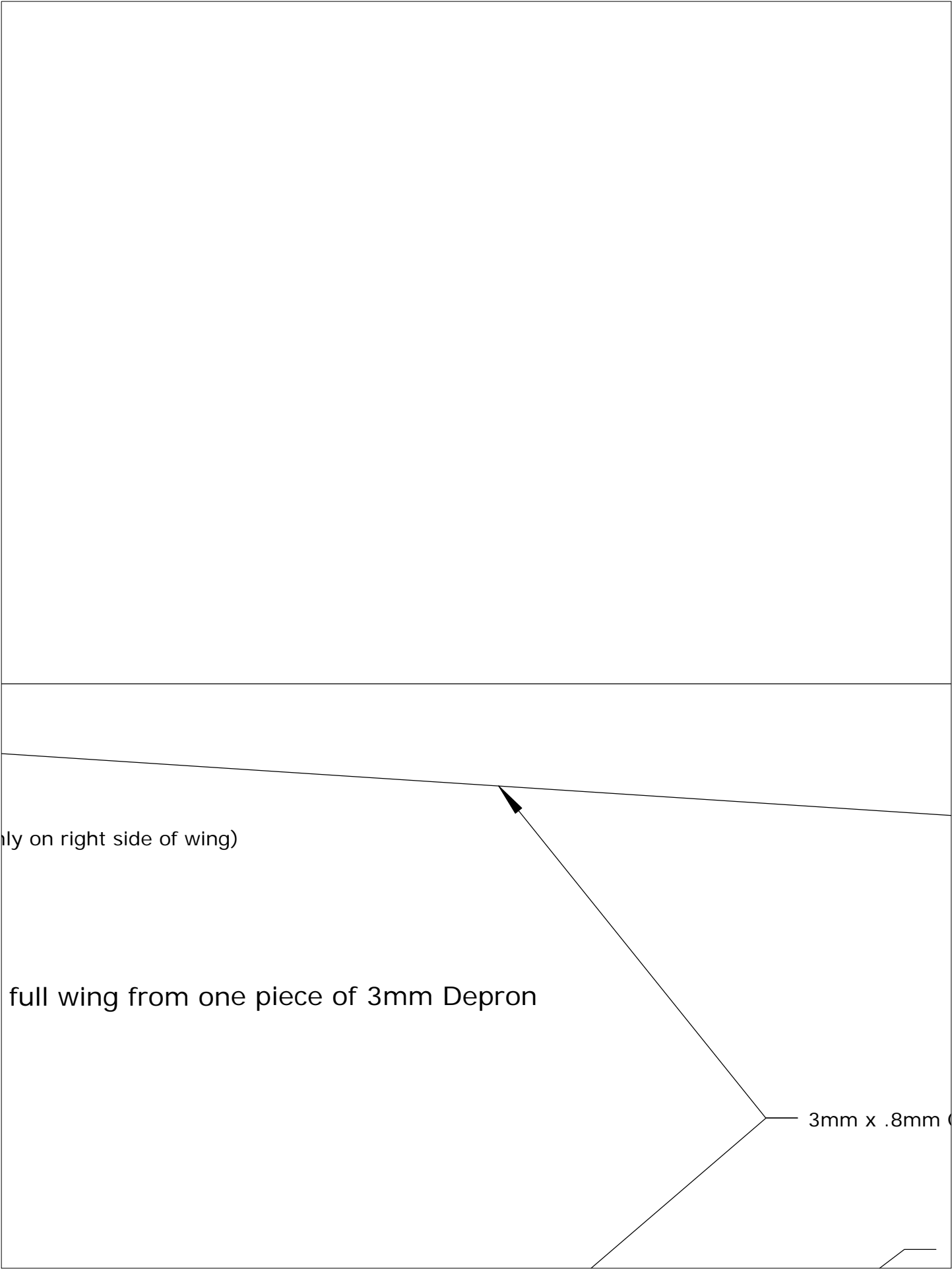








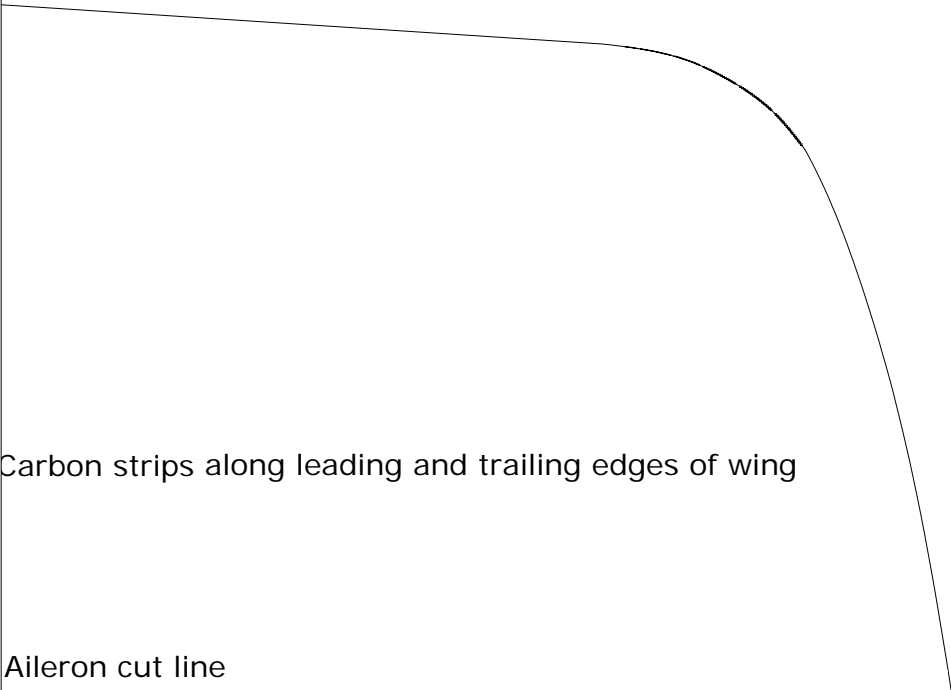




only on right side of wing)

full wing from one piece of 3mm Depron

3mm x .8mm (1/4 inch)



Carbon strips along leading and trailing edges of wing

Aileron cut line